

OVERVIEW

The SA6350 accelerometer is ideally suited for vibration monitoring of gas turbines and other high temperature machines. The piezoelectric accelerometer is integrally connected to a charge amplifier. When used with the Metrix 5580 Smart Signal Conditioner or SW5580 Smart Vibration Switch for accelerometers, a 4-20 mA signal proportional to acceleration or velocity is available. The accelerometer is electrically isolated from the stainless steel case and cable.



FEATURES

- Piezoelectric accelerometer
- Case isolated

APPLICATIONS

- Gas turbines
 - Aero and marine derivative
 - Industrial frames
- High temperature furnace fans
- Hot oil pumps

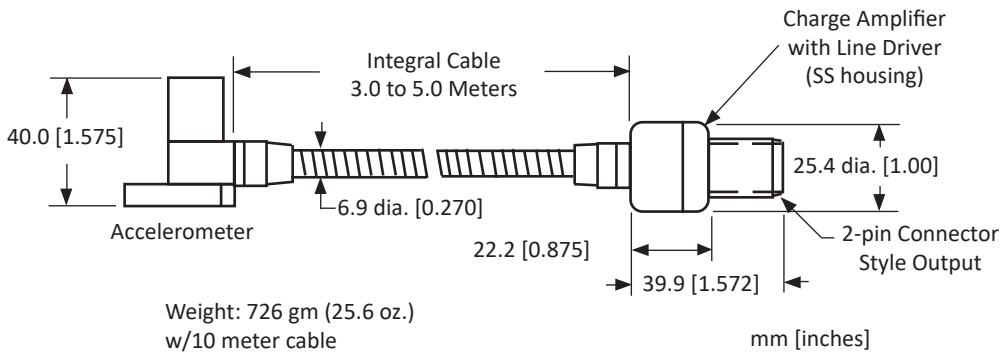
Yekan

تولید، تامین و کالیبراسیون
تجهیزات مانیتورینگ ارتعاش
www.Yekan-Vibro.ir

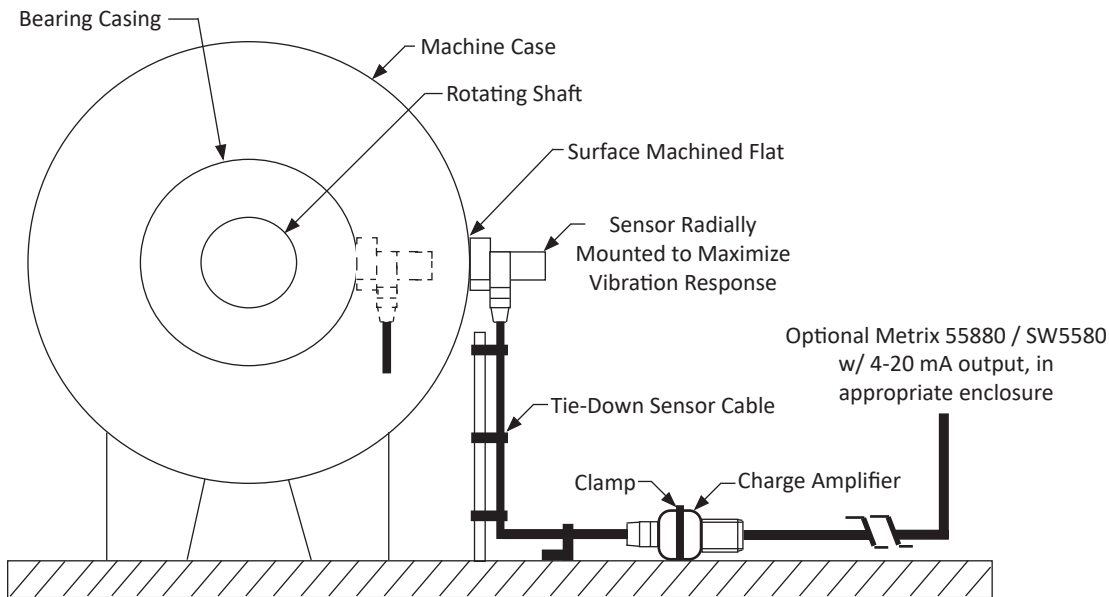
SPECIFICATIONS

Sensor	Piezoelectric accelerometer with remote charge amplifier / line driver
Frequency Response	±3.0 db from 5.0 Hz to 10,000 Hz
Case Material	Stainless steel
Sensitivity	100 mV/g (10.2 mV/m/s ²) @ 100 Hz, +/- 5% For 20°C to 30°C (Test Range), For -40°C to 325°C (Operating Range) see Sensitivity vs. Temp.
Sensitivity vs. Temp.	+/- (5% + (0.05% x °C)) from 25°C
Charge Amplifier Case	Stainless steel
Maximum Vibration Input	50 g's, peak
Output Impedance	1000 Ω
Field Wiring	See Ordering Option "C"
Shock Limit	5,000 g peak
Temperature Range	Accelerometer: -40°C to +325°C Cable: -40°C to +260°C Charge Amplifier: -40°C to +120°C
Cable	Low noise cable
Cross Axis Response	Less than 5%
Power	20 to 30 Vdc, 2 to 6 mA Not polarity sensitive
Mounted Resonance Frequency	25 kHz
Sealing	Accelerometer: hermetic
Isolation	500 Vrms, circuit to case
Agency Approvals	CSA and NRTL/C certified for Class I, Div. 1(Grps A-D), ATEX Ex ia IIC T1 Ga Ta: -40°C to 325°C
Electromagnetic Compatibility	CE Mark

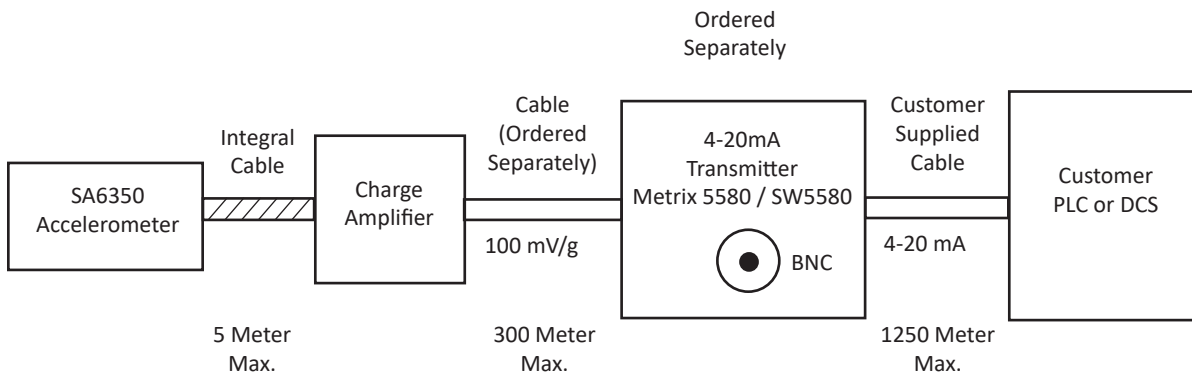
WEIGHTS AND DIMENSIONS



TYPICAL MOUNTING



4-20mA OUTPUT WIRING DIAGRAM



ORDERING INFORMATION

SA6350 HIGH TEMPERATURE ACCELEROMETER SA6350- A - B B B - C - D D D - E □ - □ □ □ - □ - □ □ □ - □

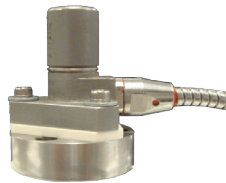
A	Base			
	3	3-hole pattern		
	4	4-hole pattern (matches Metrix 5528)		
B			Integral Cable Length	
	0	3	0	3.0 meter (9.8 ft) (minimum)
	0	5	0	5.0 meter (16.3 ft)
C	Charge Amplifier Connection			
	4	120°C charge amplifier, shielded cable		
	6	120°C charge amplifier, MS 2-pin connector		
D			Shielded Cable Length	
	0	0	0	For MS 2-pin connector
	0	1	0	1.0 meter (3.2 ft) minimum
	0	5	0	5.0 meter (16.3 ft)
E	Hazardous Area Certification			
	0	NONE		
	1	CSA and NRTL/C certified for Class I, Div. 1(Grps A-D), ATEX Ex ia IIC T1 Ga Ta: -40°C to 325°C		

ACCESSORIES (Mating Connector/Cable Type) 9193 - A - B B B B □ □ □ □ □

A	Type of Cable			
1	TPE jacket, -60°C to 125°C / 300 volt			
2	FEP Teflon jacket, -80°C to 150°C / 300 volt			
B	Cable Length			
0	0	1	0	1.0 meter (3.28 ft) minimum
0	0	2	0	2.0 meter (6.56 ft)
0	0	3	0	3.0 meter (9.8 ft)
0	1	0	0	10 meter (32.8 ft)

Isolation Option 100283*
3-hole triangle base pattern

Isolation Option 100534*
4-hole triangle base pattern

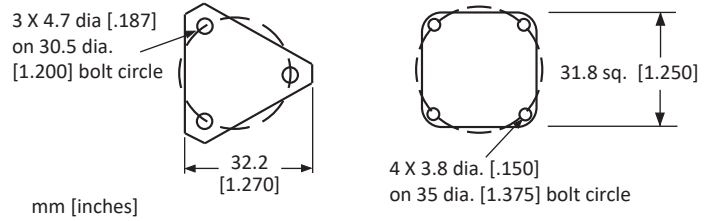


Note:

* Isolation options 100283 and 100534 provide electronic isolation from the monitored machine while coupling mechanical vibration to the SA6350 accelerometer. This kit consists of a base plate, a ceramic isolator plate and mounting hardware. Use these kits in applications where electrical noise from the monitored machine could be coupled directly to the accelerometer.

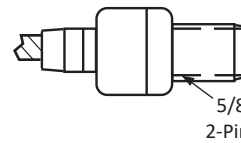
Note: Metrix is continuously improving our products. Please refer to our website to download the latest version of this document.

Sensor Base (Ordering Option A)



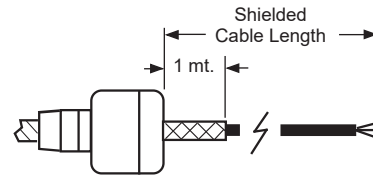
Connectors (Ordering Option C)

MS 2-Pin Connector

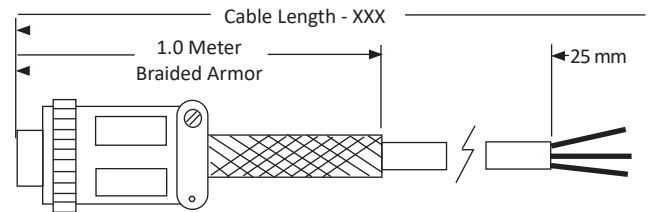


Designation shown is industry standard. SA6350 will operate with A & B reversed.

Shielded Cable w/1 Meter Braided Armor



Accessories



Line driver / charge amplifier clamps



#93825-003
Zinc-Plated Steel



#93825-004
Rubber-Cushioned Steel



#93825-002
Zinc-Plated Steel
One included with sensor

© 2025, Metrix Instrument Company, L.P. All rights reserved.

